



kapsch >>>

// Mobility and Mass Transit (People and Freight) //

Presented by

David Bolt – Vice-President Sales & Solution
Consulting (APAC Region)

17th June 2021

Shared Road Space Evolution.

Key Themes of integrating People & Freight in our shared transport network

1898 - New York City

1st international urban planning conference.



Horse manure was the problem of the day... ***“how do we rid the world of manure with increases in freight and people movement?”***

1920s

The combustion engine overtakes the humble horse.



Rise of the automobile in the early 20th century, becoming affordable to the masses.
Adoption of the car, truck, bus multiplies.

1970s to 2020

The *car becomes king* over public transport options.



Emissions take over from manure and **air quality** becomes a key concern, especially in our urban cities.
Majority of road accidents occur at intersections.

2021.. and beyond..

Rise of shared integrated multimodal mobility. *Data becomes king.*

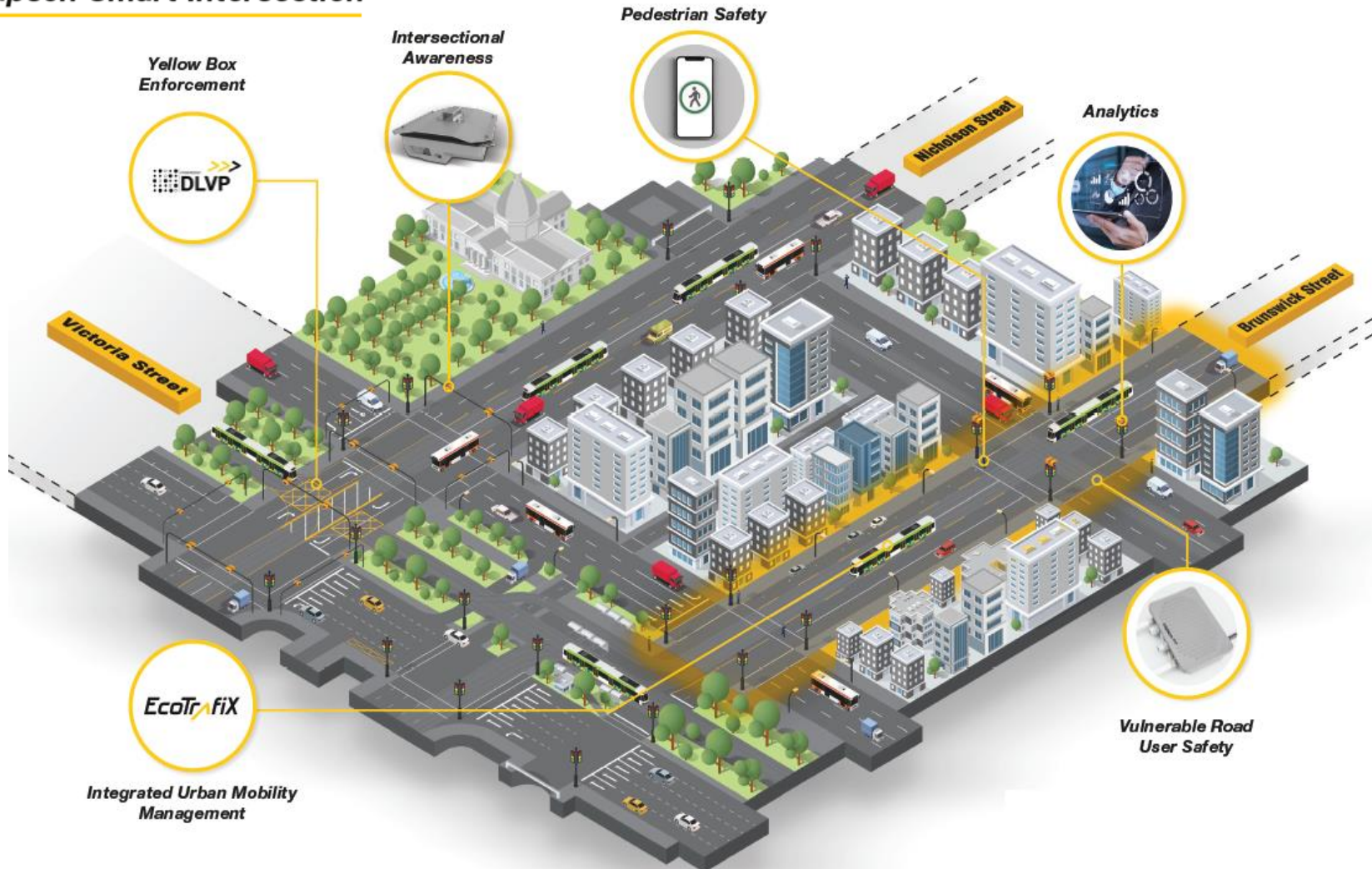


Better focus on **healthier, safer,** and **more sustainable choices** and in our shared road space.
Optimising the transport network and **journey experience** for all network users. **Rise of E-Mobility.**

The Kapsch 'Mobility Hub' within AIMES.

Multimodal Ecosystem to test ideas and innovation of shared road users

Kapsch Smart Intersection



THE UNIVERSITY OF
MELBOURNE

Kapsch Intelligent Corridor

- > Our Guiding Pillars
 - Focus on **safety, demand management, traffic insights** and **congestion**
 - Quickly deploy new and existing technology
Provide '**change levers**' to both stakeholders for awareness
 - Measure** the effectiveness of new technology



David Bolt

VP Sales & Solution Consulting (APAC Region)

Level 14, 600 St Kilda Road, Melbourne, VIC

T +61 429 892 317

david.bolt@kapsch.net

www.kapsch.net